

COMPAQT

ROBOTIZED AGILE CELL FOR THE ADDITIVE MANUFACTURING OF METALLIC PARTS XL

FROM SPECIAL XXL METAL ADDITIVE MANUFACTURING MACHINES



From 1 robot cells (part : 5m x 1,5m x 1,5 m) to 2 robots cells 18 axis for part up to 6 m x 3 m x 1,5 m and 3 tonnes

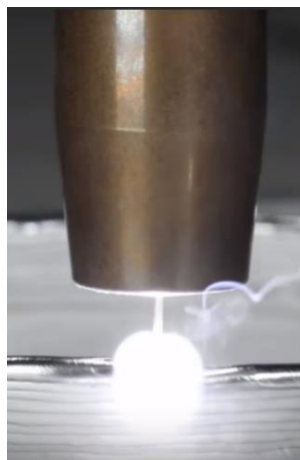
TO THE STANDARD XL MACHINES

- combining **WAAM** (Wire Arc Additive Manufacturing) technology
- the **performance of the direct control** and the **simplicity of use** of a robot controlled by numerical control
- for **various industrial requirements**: ASD, Railway, Naval, Energy, MRO, Foundry, Tools ... RTO

BASED ON THE MOST MATURE WIRED TECHNOLOGY

FRONIUS CMT cold welding system enables welding with optimal results for all materials, guarantees the most stable electric arc in the world and precise parameterization of the process.

Its **Advanced technology** makes it possible to integrate the polarity of the welding intensity into the process control.



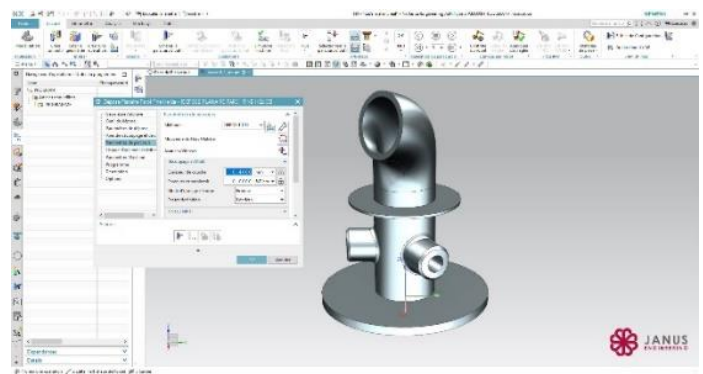
FRONIUS HEAD



AND ON NX SOFTWARE

NX software from SIEMENS and its reference suite for **additive manufacturing DED** ensures the complete development of the part:

- CAD design with **NX CAD**
- programming and simulation with **NX CAM Robotics**.



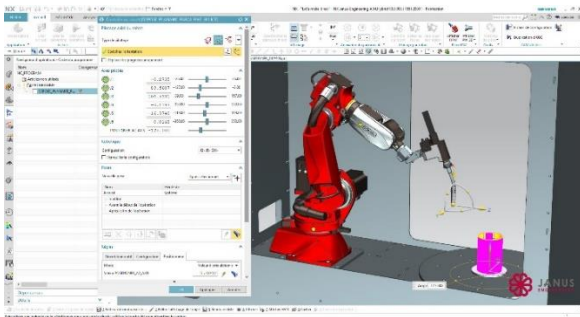
ROBUSTNESS OF THE COMPAQT

- Machine : **adaptable** dimension, **transportable**
- Machine dimensions (Depth X Width X Height) in mm from **3000 X 1000 X 2000** to **4000 X 2700 X 4000**
- **7-8 axis machine:** Robot + turntable + CMT Advanced system
- **Easy way of appropriation via CNC.** No specific knowledge of the robot is needed to drive it!
- Machine proposed with **license NX** compatible with your other software



A design based on **VLM ROBOTICS CNC** and **Direct Control** expertise that provides:

- **agility via the robot,**
- **precision of the numerical control,**
- **speed of the Direct Control**



NX CAM



Discriminating expertise from **VLM ROBOTICS** in motion control certified by the **Siemens Solution Partner** label

Solution Partner

Automation Drives

SIEMENS

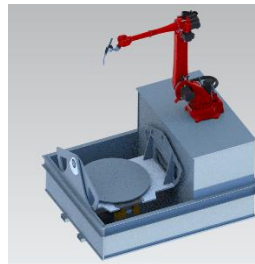
KEY PACKAGED SOLUTION IN HAND

to facilitate your first steps



CUSTOMISE BY :

- part useful volume from **Ø300 H300** to **Ø1500 H1500**
- nb of axes for turning table : **1 or 2 axes**



INSIDE WITH 2 AXES

- **Modular size** as you want but turnkey solution
- **Industrial maintainability:** machine tool maintainable by your services + remote diagnosis
- Machine designed for **traceability** and **monitoring** ...
- Robotic cell preconfigured to be **scalable,** **designed for the multifunction** ...
- **Connected machine, secure** ... remote maintenance but also data analytics (real machine 4.0)